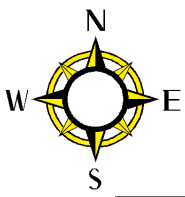
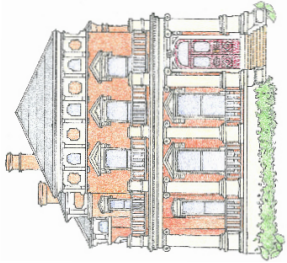


KEY

- 1- Elizabeth Harrison Rose Garden
- 2- "Shades" of the Past Hosta Garden
- 3- Freedom Garden
- 4- Day Lilies on Delaware Garden
- 5- Victorian Vintage Garden
- 6- Caroline Scott Harrison Herb Garden
- 7- Arbutus Garden
- 8- Centennial Perennial Garden
- 9- Hoosier Harvest Vegetable Garden
- 10- Presidential Lilac Garden

**BENJAMIN HARRISON
PRESIDENTIAL SITE**
 1230 N. Delaware St.
 Indianapolis, IN 46202
 (317) 631-1888
www.pbhh.org



Delaware Street

Rest-Rooms

Carriage House

Alley

Dear Visitor to the President Benjamin Harrison Home:

We are happy to learn of your interest in our historic home. We hope that you will take the time to tour our gardens while visiting the home. You will find a map of the gardens on the front of this flyer.

The Elizabeth Harrison Rose garden honors Benjamin's Mother. It contains fragrant hybrid tea, grandfloria, and Rugosa roses. Candytuft borders the roses.

The Hosta and astible find solace in the "Shades" Garden under the Austrian Pine. The plants found here were donated by the volunteer gardeners.

The Freedom Garden was established in 2006 and contains easy to care for perennials. It is anchored by three serviceberry trees and boxwood shrubs. Original hollyhock from the 1800's accent the east edge.

On the south and east sides of the staff parking lot you can enjoy "Daylilies on Delaware" and peonies, and iris.

The Victorian Vintage Garden contains a grape arbor built in 2005. The Concord Grapes planted by President Harrison were transplanted to this spot from another location on the property.

The Herb Garden was designed with herb sections for home, kitchen, medicinal, and multiple uses. Also planted here are the Harrisons' strawberries, peonies and an original Mock Orange shrub.

The Arbutus Garden was designed and is maintained by the Arbutus Garden Club.

Perennials and some annuals wind south down the fence row bordered by lambs ear. This Centennial Perennial Garden also contains a clematis named "The President."

Gardening was a love of President Harrison. Vegetables for use during the growing season as well as those that could be preserved in the root cellar are grown in the Hoosier Harvest Vegetable Garden.

The lilacs in the Presidential Lilac Garden were all propagated in the Victoria era. Viburnum and spring bulbs are also a part of this garden planted in 2005.



★ President Benjamin Harrison Home

P Bus Parking